

**BINAR**

*Improving your productivity*

# Installation 8 units Maples Leaf, Toronto, Canada

2015-01-22 / JoS

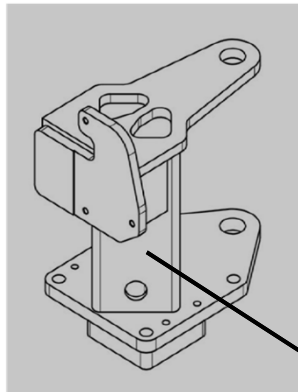


**BINAR | QUICK-LIFT SYSTEMS AB™**

# **BINAR** QL AC 75i Wash down, arm

Improving your productivity

2015-01-22 / JoS



**Inner bracket in stainless steel  
5mm gradient**

**Plastic coated wire**

**Arm in anodized aluminum**

**All arm profiles sealed**

**BINAR | QUICK-LIFT SYSTEMS™**

**Power cable and air hose runs in a cable tray underneath the arm**

**Surface-treated drive unit**

**Standard handle in wire (IP 45)  
Handle ref. 012842**

- All screws in stainless steel
- All axles in stainless steel
- Lifting capacity 75kg
- Arm length up to 4,2m

**Pillar is made of saltwater resistant material (SIS2343)  
tight welded and surface-treated through glasblasting**

**Anodized aluminum, 20  $\mu$ :**

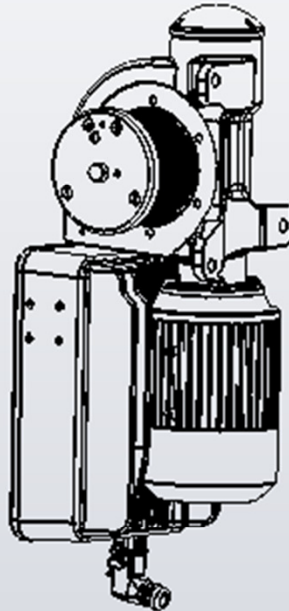
- Gear case
- Electrical housing
- Cover for electrical box

**Stainless X8CrNiS 18-9 (SS2346)**

- Worm screw
- Cover
- Wire drum
- Washer wire drum
- Shaft
- Cover for encoder
- Electrical connector

**IP classification**

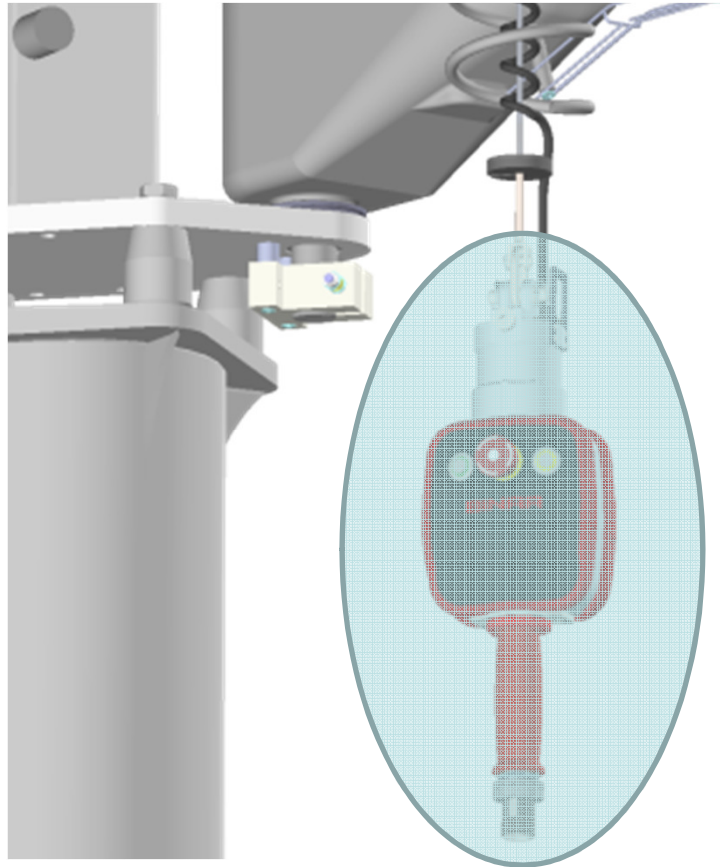
- IP 55

**Surface treatment:****Metallization Spray Zinc, 100  $\mu$** 

- Electric motor

**Rubber / Plastic sealing**

- O-ring under the encoder lid,
- Sealing between motor and gear



### Principles of washing

- Once Quick-Lift is washed by water the handle must be sealed of with a plastic bag.
- The handle is afterwards manually whipped of with a damp cloth with cleaning agent.
- The cleaning agent is removed from the handle with a damp cloth with water.
- Relative humidity maximum 80%.